

## Information to Order



ACD - I - II - III

### I Type

- ◆ A : ATS A⇌B Transfer
- ◆ S : ATS A⇌B Transfer + Synchronized + RS 485 + By-pass ATS
- ◆ NA : ATS A⇌OFF⇌B Transfer
- ◆ NS : ATS A⇌OFF⇌B Transfer+ Synchronized + RS 485 + By-pass ATS

### II Option

- ◆ C : RS 485
- ◆ B : By-pass ATS
- ◆ CB : RS 485 + By-pass ATS
- ◆ - : None

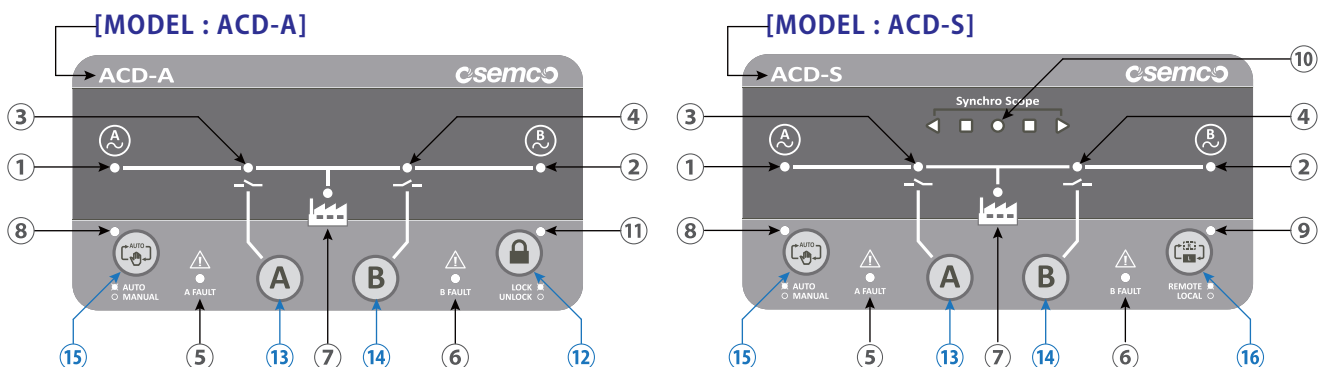
### III Wiring Cable

- ◆ 2 : 2M
- ◆ 3 : 3M
- ◆ - : None

## Basic Function

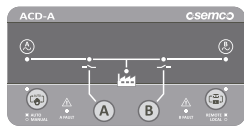
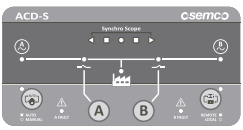
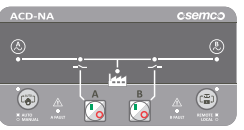
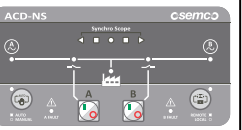
<b>ACD-A</b>	Basic Function : ATS A⇌B Transfer Applicable ATS : PC, PCN, PSO, T3, TB3, TN, TBN Optional Functions Applicable	<b>ACD-NA</b>	Basic Function : ATS A⇌OFF⇌B Transfer Applicable ATS : PCN, ATCB, TN, TBN Optional Functions Applicable
<b>ACD-S</b>	Basic Function : ATS A⇌B Transfer Applicable ATS : PC, PCN, PSO, T3, TB3, TN, TBN Built-in Functions : Synchronized Transfer (within 30°), RS 485, By-pass ATS Interface	<b>ACD-NS</b>	Basic Function : ATS A⇌OFF⇌B Transfer Applicable ATS : PCN, ATCB, TN, TBN Built-in Functions : Synchronized Transfer (within 30°), RS 485, By-pass ATS Interface

## External View

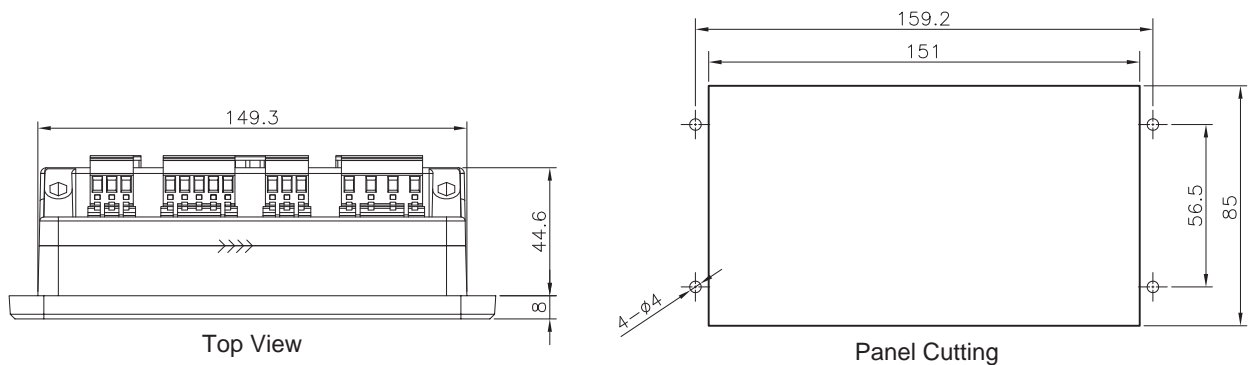


① A-POWER Lamp	⑤ ATS A-Fault Lamp	⑨ Remote/Local Status Lamp	⑬ ATS A-Closing Button
② B-POWER Lamp	⑥ ATS B-Fault Lamp	⑩ Synchronizing Status Lamp	⑭ ATS B-Closing Button
③ ATS A-Closing Status Lamp	⑦ LOAD-POWER Lamp	⑪ Lock/Unlock Status Lamp	⑮ Auto/Manual Selection Button
④ ATS B-Closing Status Lamp	⑧ Auto/Manual Status Lamp	⑫ Lock/Unlock Selection Lamp	⑯ Remote/Local Selection Button

### Comparative Summary

CLASSIFICATION		ACD-A	ACD-S	ACD-NA	ACD-NS
Photo					
Function	Transfer Method	A ⇔ B	A ⇔ B	A ⇔ OFF ⇔ B	A ⇔ OFF ⇔ B
	Synchronized Transfer	X	O	X	O
	Remote Control	△ (Option)	O	△ (Option)	O
	By-pass ATS Interface	△ (Option)	O	△ (Option)	O
	Automatic Control Fault Alarm	O	O	O	O
	Priority Selection	O	O	O	O
	Voltage Setting	O (220V or 230V)	O (220V or 230V)	O (220V or 230V)	O (220V or 230V)
	Frequency Setting	O (50Hz or 60Hz)	O (50Hz or 60Hz)	O (50Hz or 60Hz)	O (50Hz or 60Hz)
	Over-voltage Sensing	O	O	O	O
	Under-voltage Sensing	O	O	O	O
	Low-frequency Sensing	O	O	O	O
High-frequency Sensing	O	O	O	O	
Time Setting Range	0~ 99 sec	0~ 99 sec	0~ 99 sec	0~ 99 sec	
Applicable Models	TN / TBN	O	O	O	O
	T3 / TB3	O	O	X	X
	PC / PSO	O	O	X	X
	PCN	O	O	O	O
	ATCB	X	X	O	O

### Outline Dimension



unit : mm

